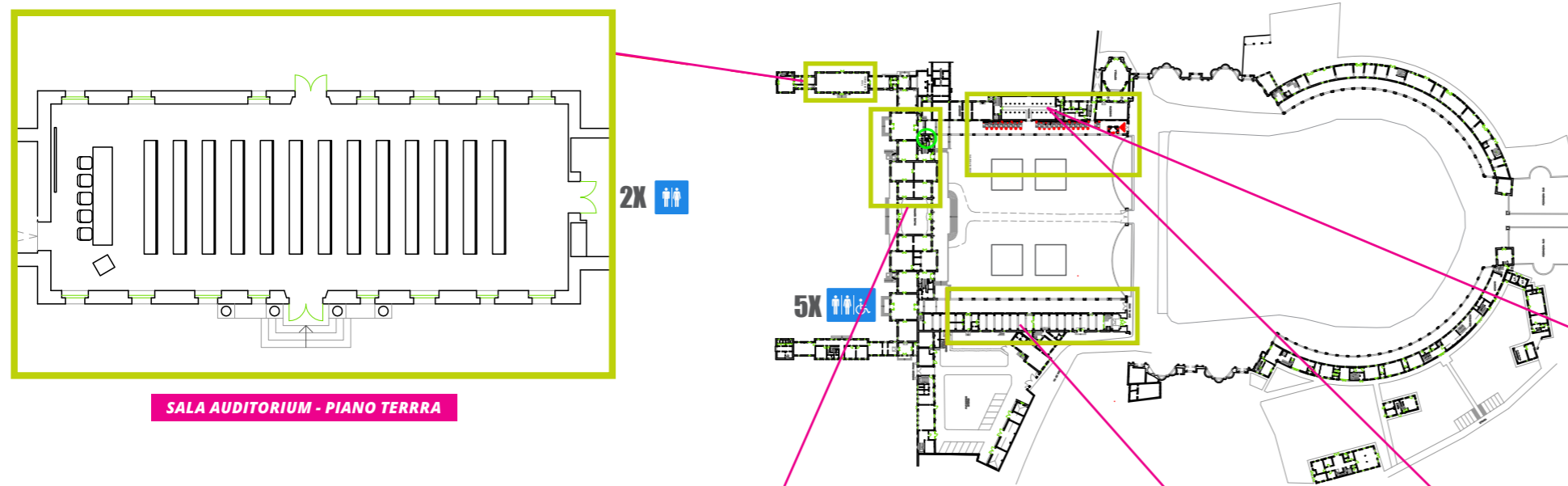


EXHIBITION <space>

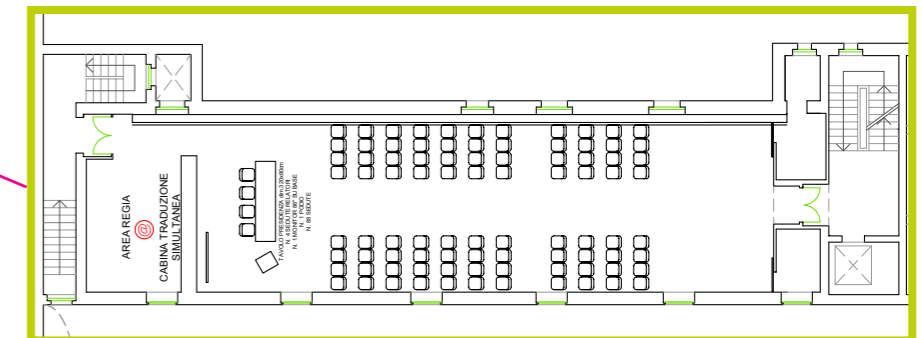


SALA AUDITORIUM - PIANO TERRA

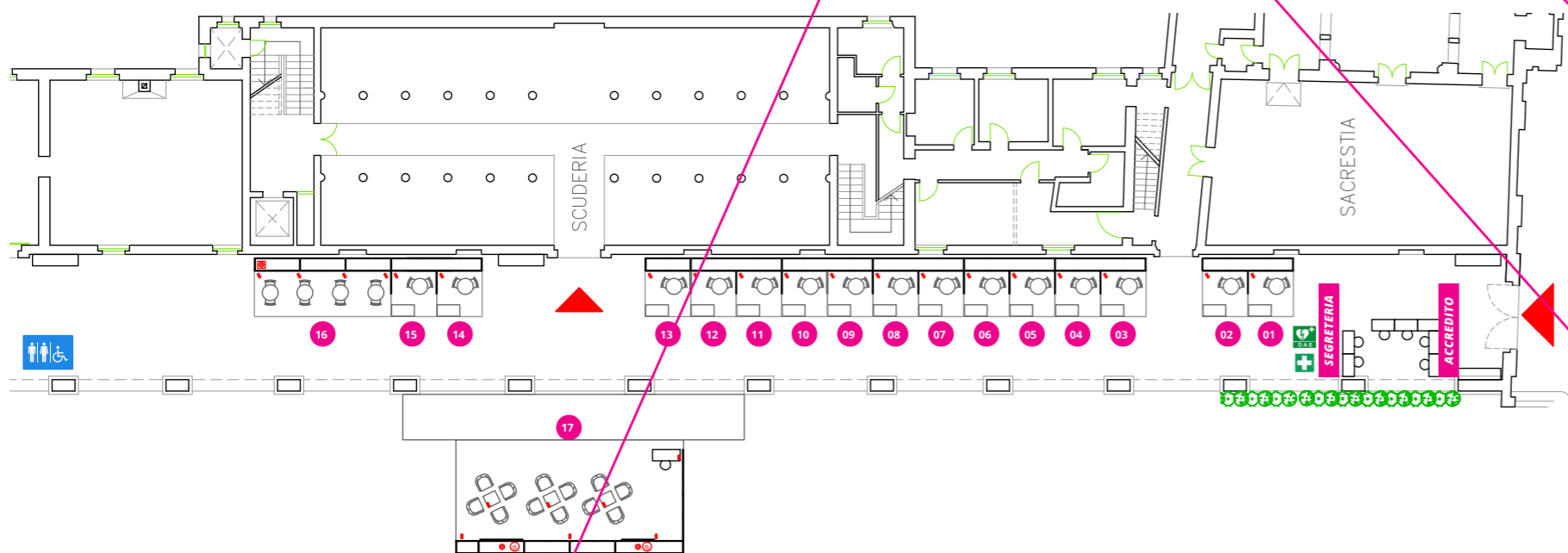
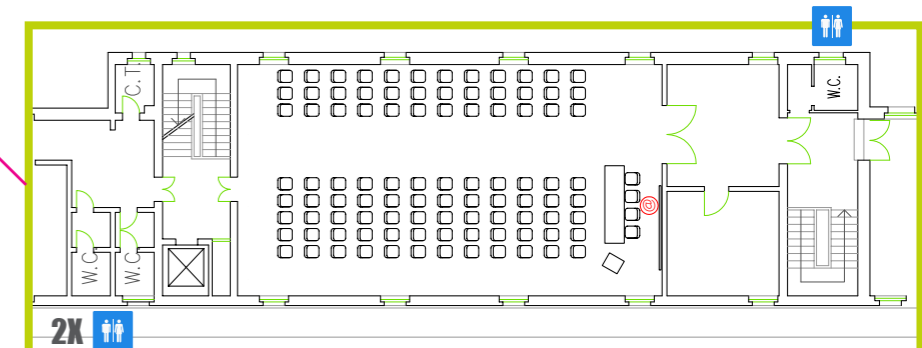
2X

5X

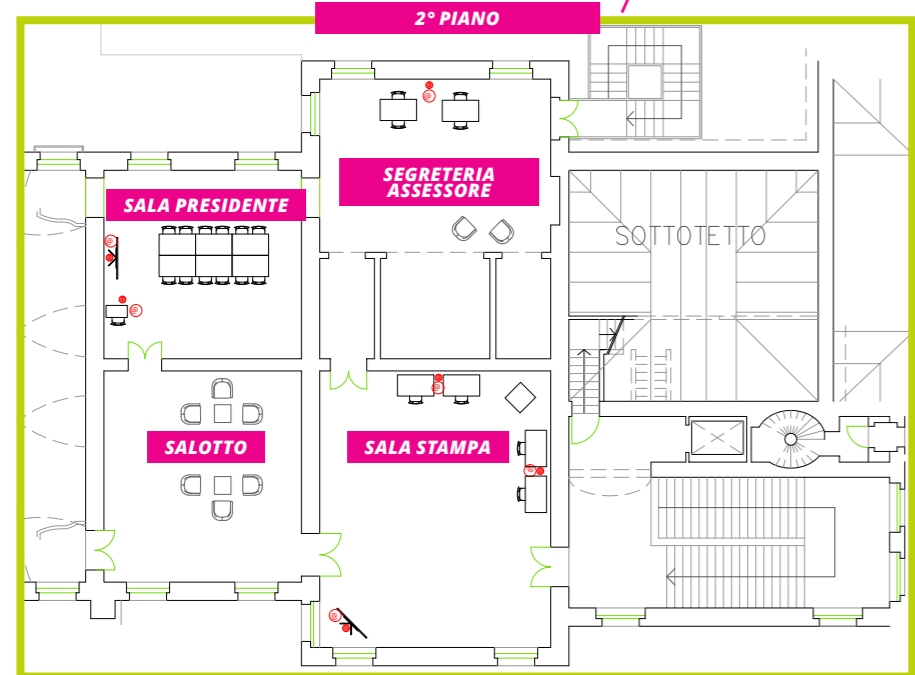
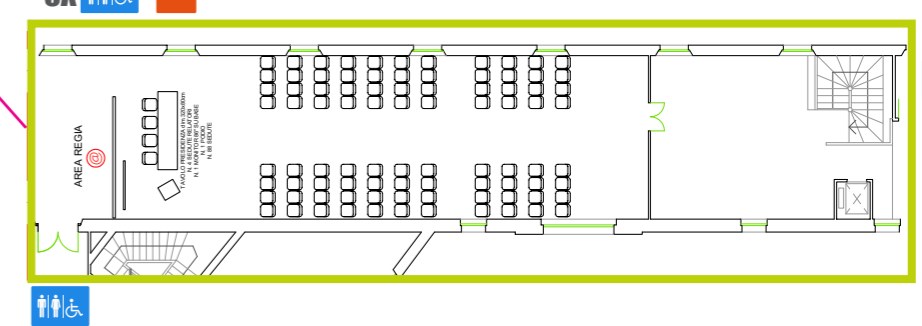
SALA MANIN - 1° PIANO



SALA CARROZZE - 2° PIANO



SALA DEL DOGE - 1° PIANO



ELENCO ESPOSITORI








- | | |
|--|---|
| 01 AGE.NA.S. | 11 IDEALSERVICE |
| 02 AIFA - AGENZIA ITALIANA DEL FARMACO | 12 COOPSERVICE - SERVIZI ITALIA |
| 03 BD ITALIA | 13 VEOLIA ITALIA |
| 04 OPERAMED - ALTAMED - NICFA - TOBIN | 14 POLITS |
| 05 UNIVERSIIS | 15 AINDO |
| 06 FUJIFILM HEALTHCARE ITALIA | 16A IT'S AMORPHOUS AI |
| 07 LAIFE REPLY | 16B CIAODOTT |
| 08 INTERSYSTEMS ITALIA | 16C LIBRARYMED |
| 09 FASTWEB + VODAFONE | 16D LUMNORA |
| 10 EDISON NEXT | 17 REGIONE AUTONOMA FRIULI FVG - PROMOTURISMOFVG - INSIEL |

Scarica la
MAPPA ESPOSITORI
in formato .pdf

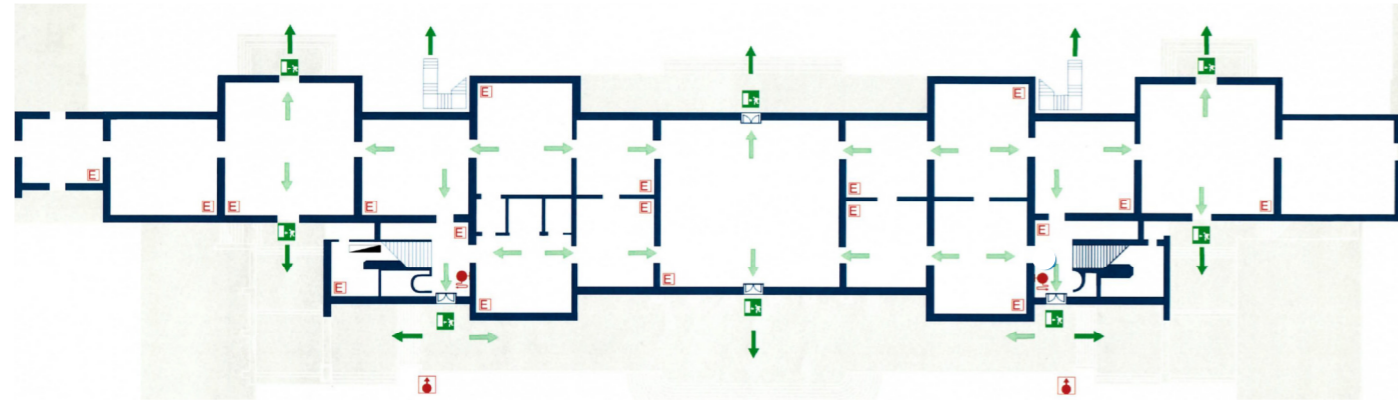
SCANSIONA IL QR-CODE



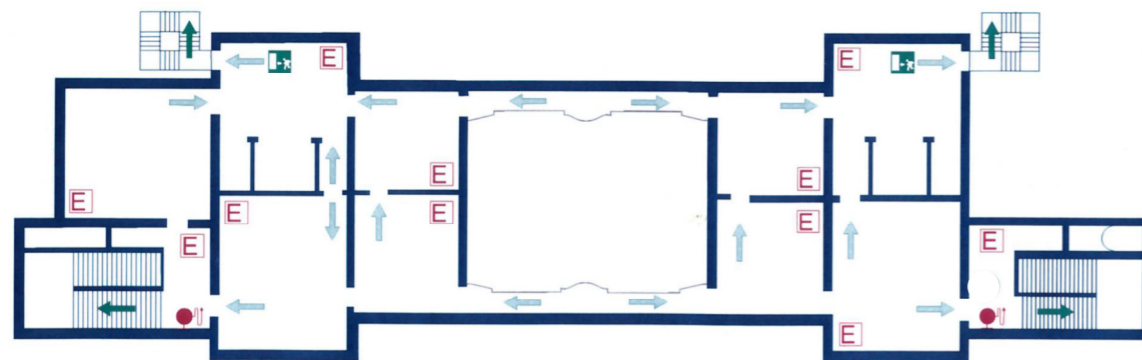
Villa Marin, Corpo Gentilizio – schema di evacuazione

-  USCITE DI SICUREZZA
-  ESTINTORE PORTATILE 6-12 KG
-  IDRANTE A MURO CON TUBAZIONE
-  IDRANTE SOPRASUOLO FISSO
-  PERCORSO USCITA VERSO IL BASSO
-  PERCORSO USCITA ORRIZZONTALE
-  QUADRO ELETTRICO GENERALE

PIANO TERRA



PRIMO PIANO




Al verificarsi di un infortunio o un malore, allertare il personale sanitario presente nelle sale e negli spazi della villa.



È presente in ingresso un defibrillatore DAE nella barchessa di Levante (Ingresso biglietteria)

Sempre qui è collocata una cassetta di pronto soccorso



 Numero unico per le emergenze **112**

PARTNER



DIAMOND SPONSOR



GOLD SPONSOR



SILVER SPONSOR



SI RINGRAZIA INOLTRE

